



St. Tammany Parish, Louisiana Feasibility Study



**Appendix D – Annex 6 - ROW, Access and
Staging Maps for the Optimized TSP**

May 2023

Contents

1 ROW, ACCESS AND STAGING AREA MAPS for levee and floodwall system.....	3
1.1 ACCESS AND STAGING AREAS FOR WESTERN TIE-IN LEVEE	3
1.2 ACCESS AND STAGING AREAS for Tammany trace pedestrian gate and sluice gate	4
1.3 ACCESS AND STAGING AREAS for LEVEE FROM WESTERN TIE-IN TO BAYOU PAQUET ROAD.....	4
1.4 ACCESS AND STAGING AREAS for SLUICE GATE # 7.....	5
1.5 ACCESS AND STAGING AREAS for SLUICE GATE # 6.....	6
1.6 ACCESS AND STAGING AREAS FOR LEVEE FROM BAYOU PAQUET TO BAYOU LIBERTY. 7	
1.7 ACCESS AND STAGING AREAS for PUMP STATION AND FLOODGATE COMPEX AT BAYOU PAQUET	8
1.8 ACCESS AND STAGING AREAS FOR LEVEE FROM BAYOU LIBERTY TO BAYOU BONFOUCA	9
1.9 ACCESS AND STAGING AREAS for PUMP STATION AND FLOODGATE COMPEX AT BAYOU LIBERTY	10
1.10 ACCESS AND STAGING AREAS for LEVEE AT Bayou bonfouca	11
1.11 ACCESS AND STAGING AREAS for PUMP STATION AND FLOODGATE COMPEX AT BAYOU BONFOUCA.....	12
1.12 ACCESS AND STAGING AREAS FOR SLIDELL RAILROAD FLOODGATE	13
1.13 ACCESS aND STAGING AREA FOR OAK HARBOR LEVEE	14
1.14 ACCESS aND STAGING AREAS FOR ALIGNMENT AT INTERSTATE CROSSING	15
1.15 ACCESS aND STAGING AREA FOR I-10 TO OLD SPANISH TRAIL LEVEE.....	16
1.16 ACCESS aND STAGING AREAS FOR Old Spanish Trail VEHICULAR GATE	17
1.17 ACCESS aND STAGING AREA FOR LEVEE FROM OLD SPANISH TRAIL TO EASTERN FLOODWALL.....	18
1.18 ACCESS AND STAGING AREAS AT W-14 SectOR GATE and PUMP COMPEX.....	19
1.19 ACCESS AND STAGING AREAS at SLUICE GATE # 8.....	20
1.20 ACCESS AND STAGING AREAS AT GAUSE BOULEVARD AND I-10 TIE-IN	21
1.21 ACCESS AND STAGING AREAS FOR FRENCH BRANCH AND REINE CANAL SLUICE GATEs	22
2. ROW, ACCESS AND STAGING AREA MAPS for MILE BRANCH CHANNEL IMPROVEMENTS	24
2.1 ACCESS, features, STAGING AREAS and backwater area for mile branch from Collins boulevard to Columbia street.....	24
2.2 ACCESS, features, AND STAGING AREAS for mile branch from Columbia street to 31 st Avenue	24
2.3 ACCESS, features, AND STAGING AREAS for mile branch from 29th Avenue to 27 th avenue ..	26
2.4 ACCESS, features, AND STAGING AREAS for mile branch from 25th Avenue to 23rd avenue .	26
2.5 ACCESS, features, AND STAGING AREAS for mile branch from 21st Avenue to 19th avenue..	27
2.6 ACCESS, features, AND STAGING AREAS for mile branch from 16 th avenue to presidents drive	28

2.7 ACCESS, features, AND STAGING AREAS for mile branch from presidents drive to tchefuncte river 29

1 ROW, ACCESS AND STAGING AREA MAPS FOR LEVEE AND FLOODWALL SYSTEM

The following maps provide the ROW for the features of the Optimized TSP alignment starting from the northwest end of the alignment in West Slidell and going eastward to South Slidell and ending on the eastern end of the alignment.

From Figure D6:1-40 to Figure D6:1-41, the alignment would be part of Western High Ground Tie-in for Year 2082.

From Figure D6:1-42 to Figure D6:1-50, the alignment would be part of West Slidell.

From Figure D6:1-51 to Figure D6:1-60, the alignment would be part of South Slidell.

1.1 ACCESS AND STAGING AREAS FOR WESTERN TIE-IN LEVEE

This portion of the alignment is part of the Western High Ground Tie-in for Year 2082, which is projected to be constructed during the fourth lift for West Slidell.

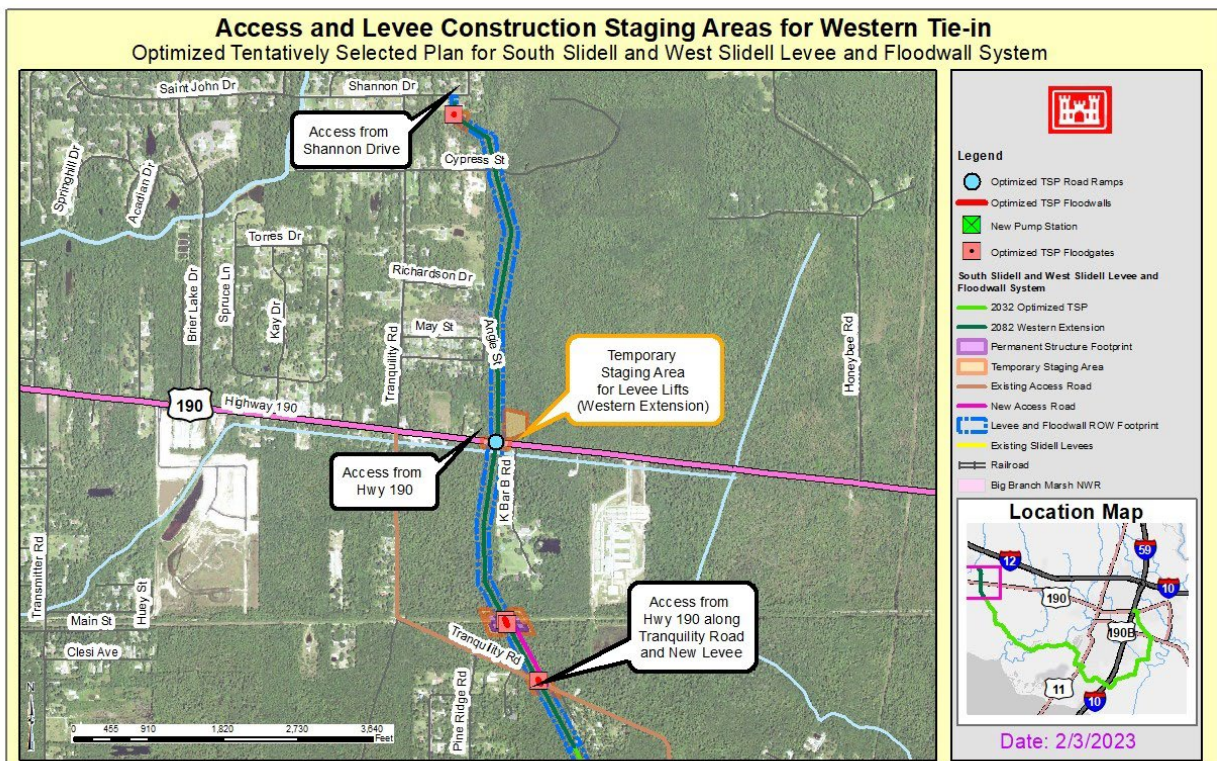


Figure D6:1-1. ROW, Access, and Staging Areas for Western Tie-In

1.2 ACCESS AND STAGING AREAS FOR TAMMANY TRACE PEDESTRIAN GATE AND SLUICE GATE

This portion of the alignment is part of the Western High Ground Tie-in for Year 2082, which is projected to be constructed during the fourth lift for West Slidell.

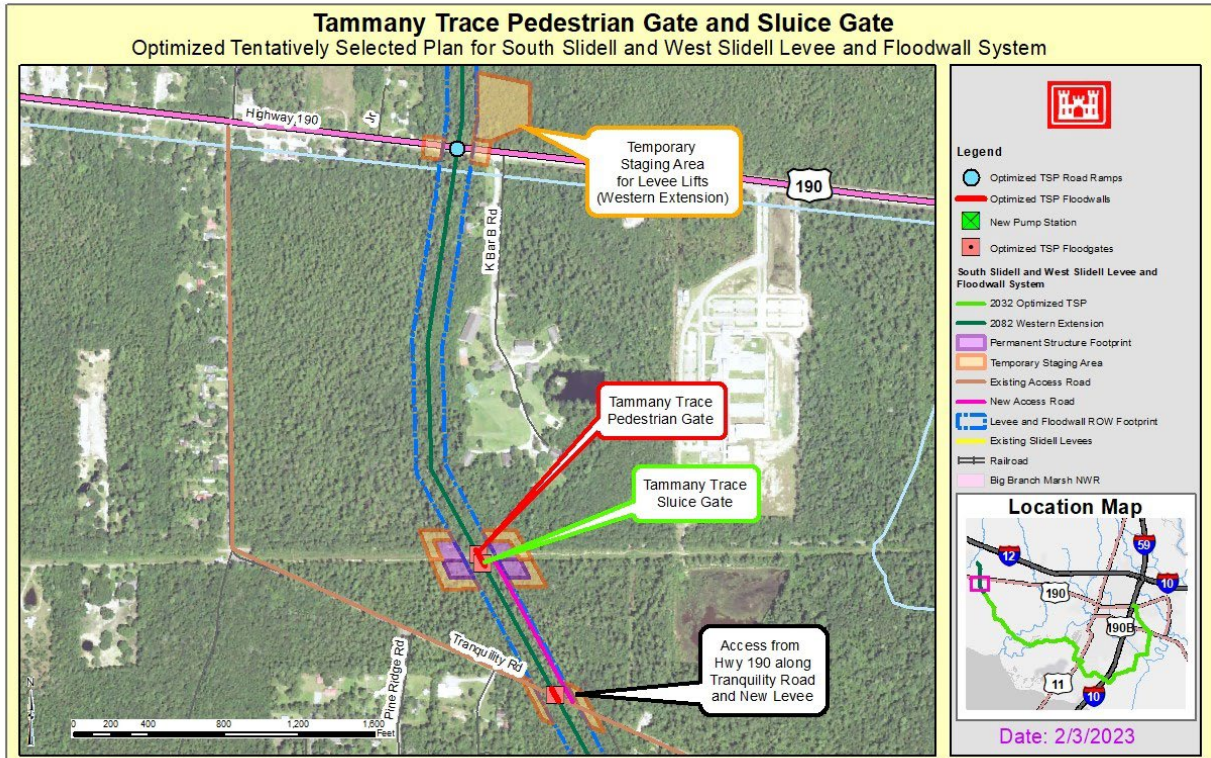


Figure D6:1-2. ROW, Access, and Staging Areas for Tammany Trace Pedestrian and Sluice Gate

1.3 ACCESS AND STAGING AREAS FOR LEVEE FROM WESTERN TIE-IN TO BAYOU PAQUET ROAD

This portion of the levee is part of West Slidell.

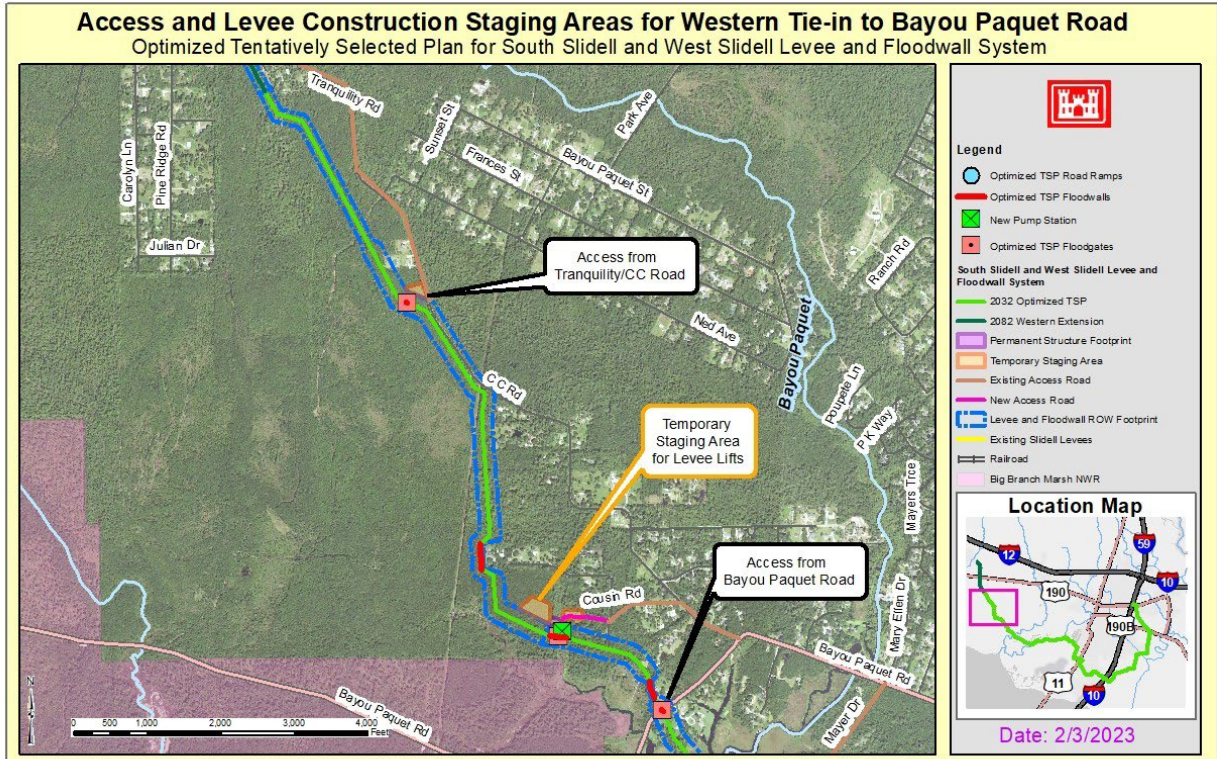


Figure D6:1-3. ROW, Access, and Staging Areas for Western Tie-in to Bayou Paquet Road

1.4 ACCESS AND STAGING AREAS FOR SLUICE GATE # 7

This sluice gate is part of West Slidell.

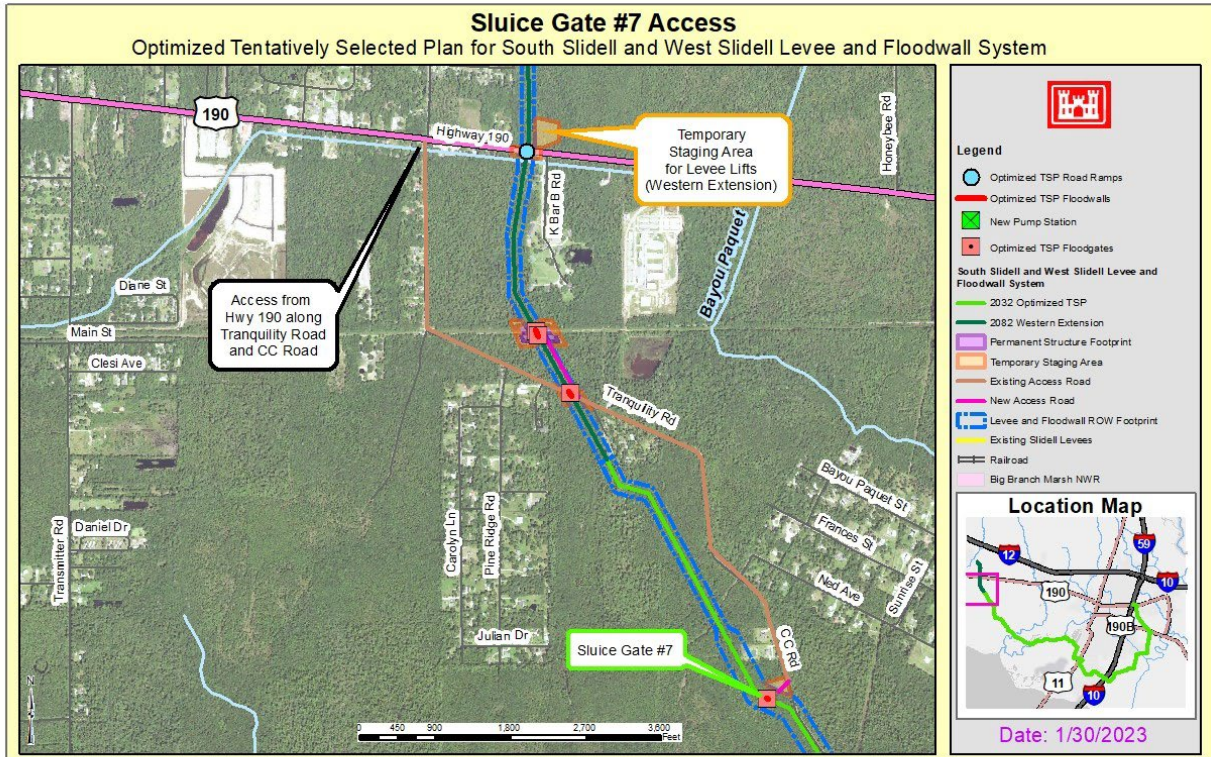


Figure D6:1-4. ROW, Access, and Staging Areas for Sluice Gate # 7

1.5 ACCESS AND STAGING AREAS FOR SLUICE GATE # 6

This sluice gate is part of West Slidell.

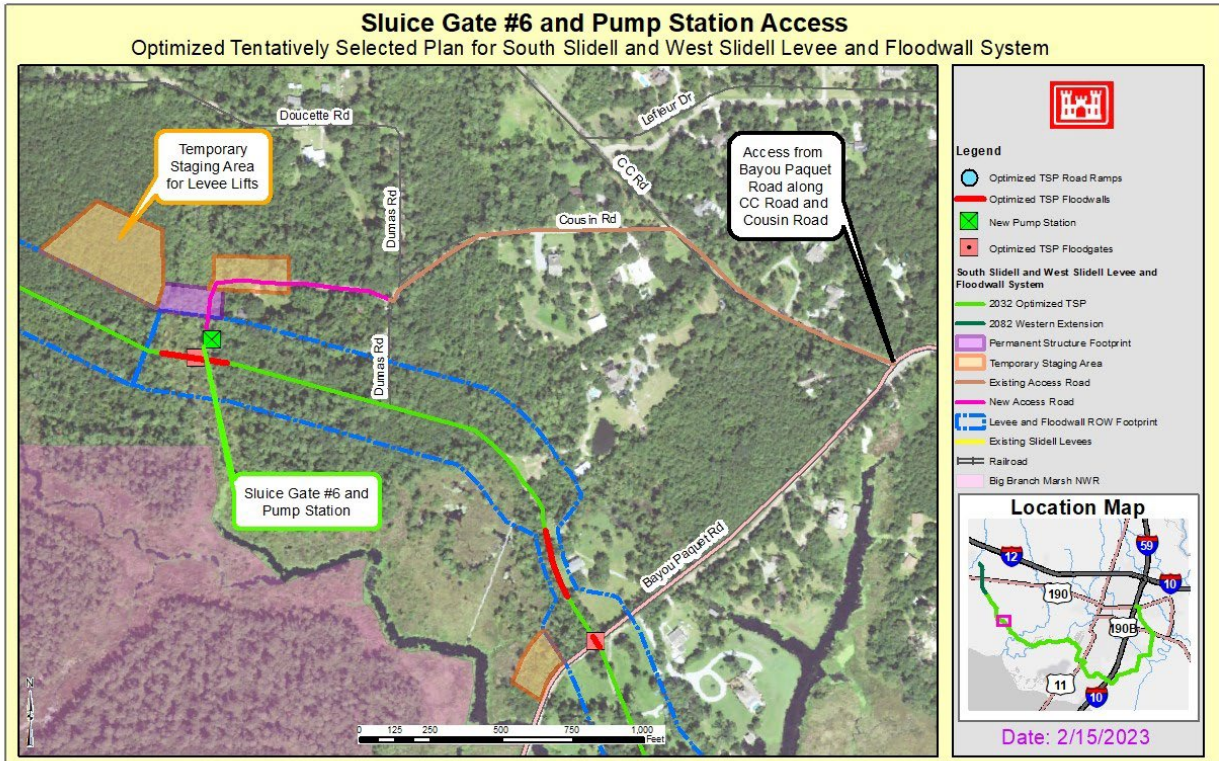


Figure D6:1-5. ROW, Access, and Staging Areas for Sluice Gate # 6

1.6 ACCESS AND STAGING AREAS FOR LEVEE FROM BAYOU PAQUET TO BAYOU LIBERTY

This portion of the levee is part of West Slidell.

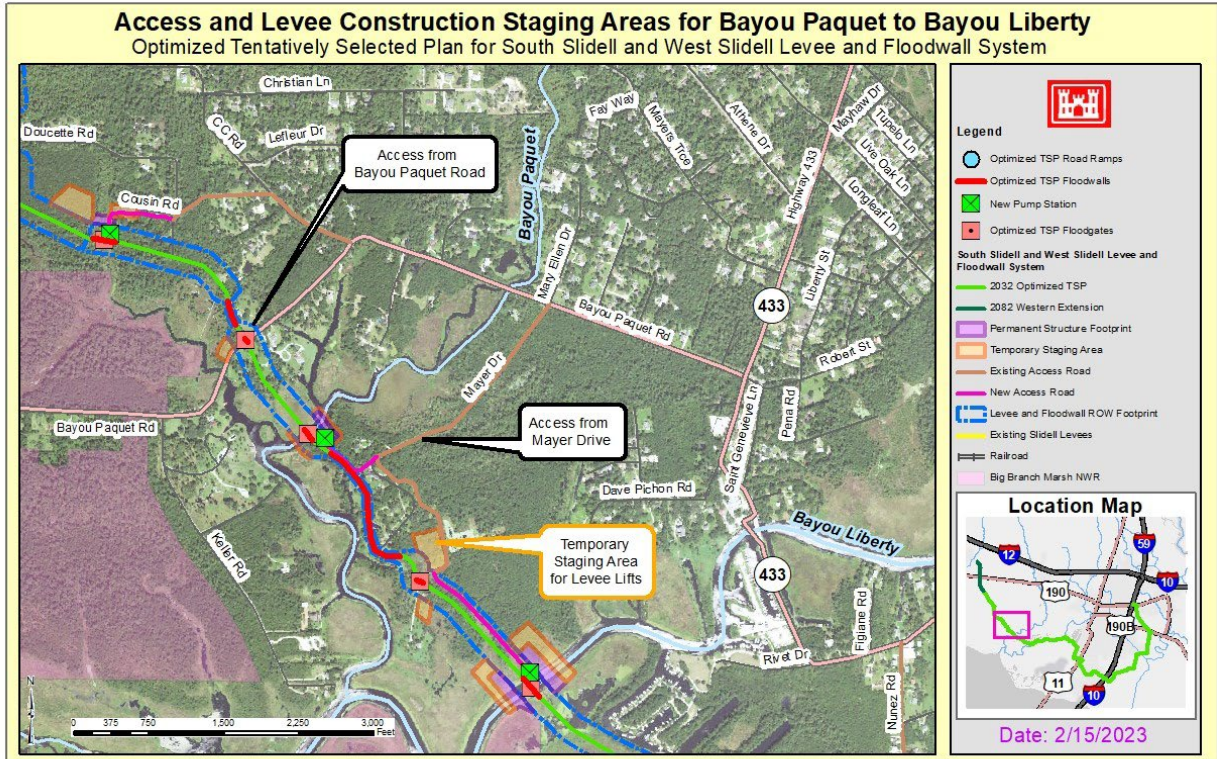


Figure D6:1-6. ROW, Access, and Staging Areas for Bayou Paquet to Bayou Liberty

1.7 ACCESS AND STAGING AREAS FOR PUMP STATION AND FLOODGATE COMPLEX AT BAYOU PAQUET

The pump station and floodgate are part of West Slidell.

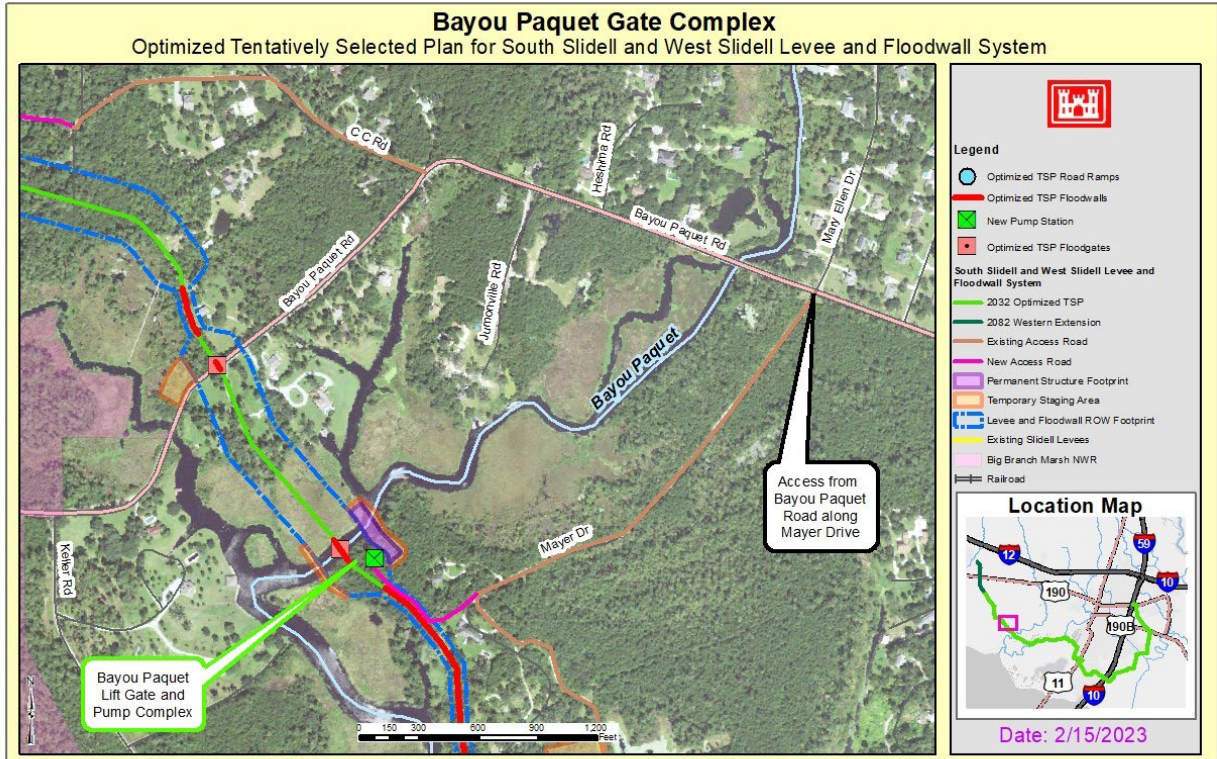


Figure D6:1-7. ROW, Access, and Staging Areas for the Bayou Paquet Pump Station and Floodgate Complex

1.8 ACCESS AND STAGING AREAS FOR LEVEE FROM BAYOU LIBERTY TO BAYOU BONFOUCA

This levee is part of West Slidell.

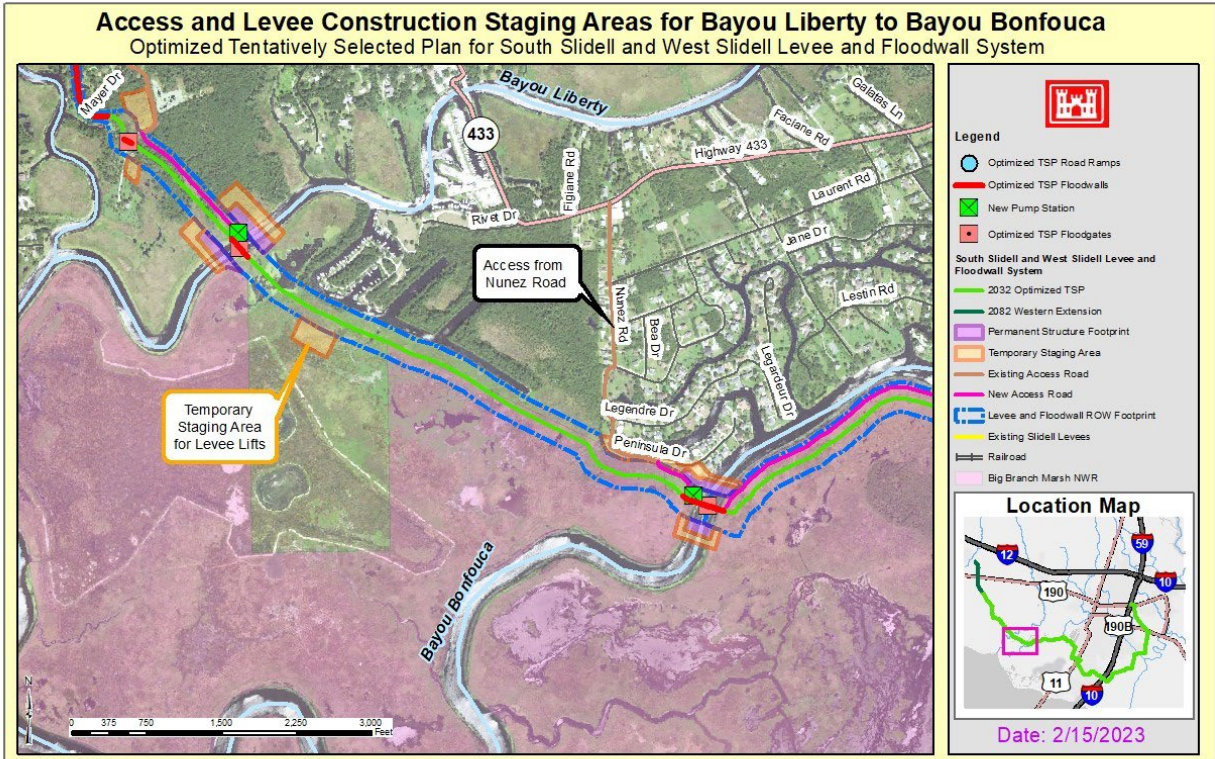


Figure D6:1-8. ROW, Access, and Staging Areas for Bayou Liberty to Bayou Bonfouca

1.9 ACCESS AND STAGING AREAS FOR PUMP STATION AND FLOODGATE COMPLEX AT BAYOU LIBERTY

The pump station and floodgate are part of West Slidell.

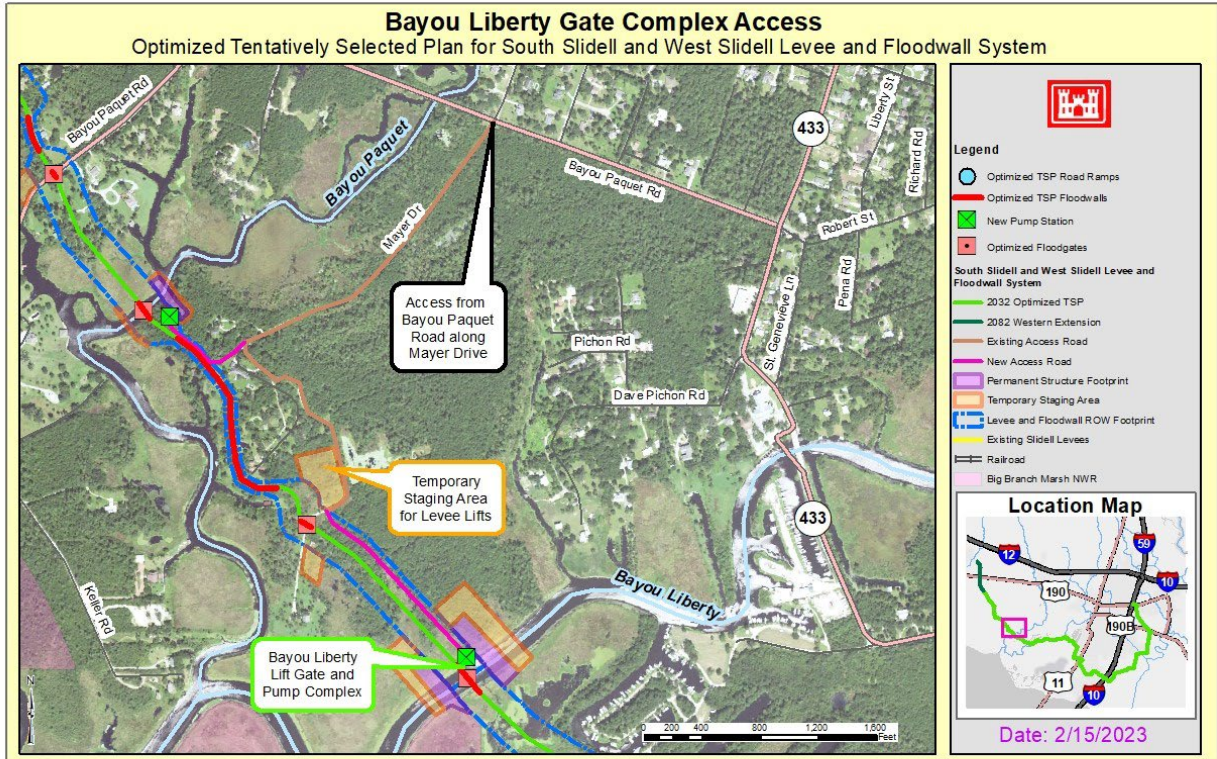


Figure D6:1-9. ROW, Access, and Staging Areas for the Bayou Liberty Pump Station and Floodgate

1.10 ACCESS AND STAGING AREAS FOR LEVEE AT BAYOU BONFOUCA

This portion of the West Slidell alignment would be constructed on the northern boundary of the Big Branch National Wildlife Refuge.

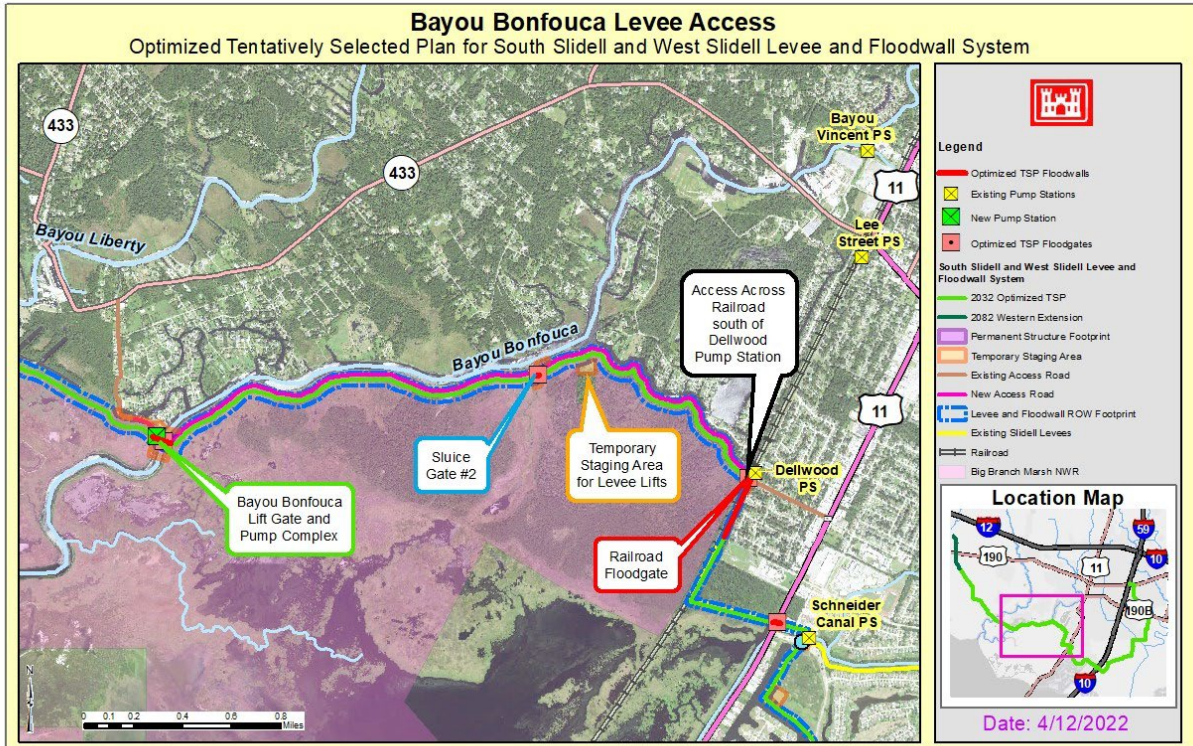


Figure D6:1-10. ROW, Access, and Staging Areas for the Big Branch National Wildlife Refuge

1.11 ACCESS AND STAGING AREAS FOR PUMP STATION AND FLOODGATE COMPLEX AT BAYOU BONFOUCA

This pump station and floodgate is part of West Slidell.

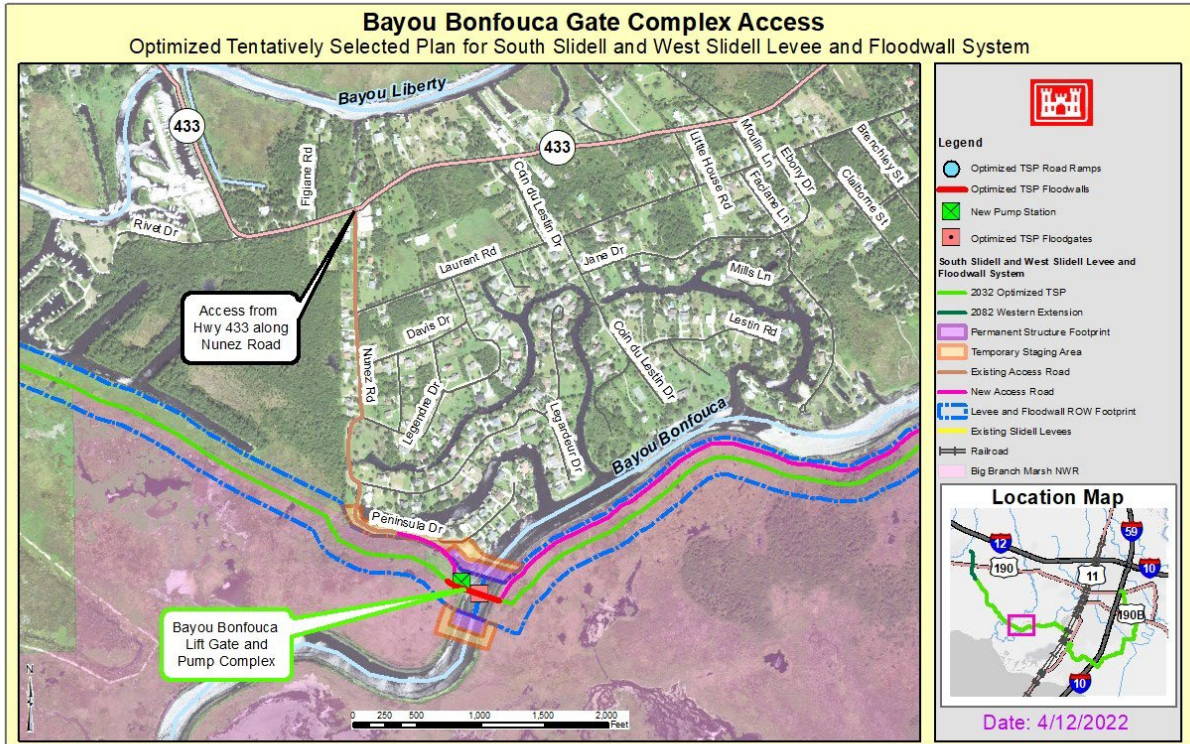


Figure D6:1-11. ROW, Access, and Staging Areas for the Bayou Bonfouca Pump Station and Floodgate Complex

1.12 ACCESS AND STAGING AREAS FOR SLIDELL RAILROAD FLOODGATE

This railroad floodgate is part of South Slidell.

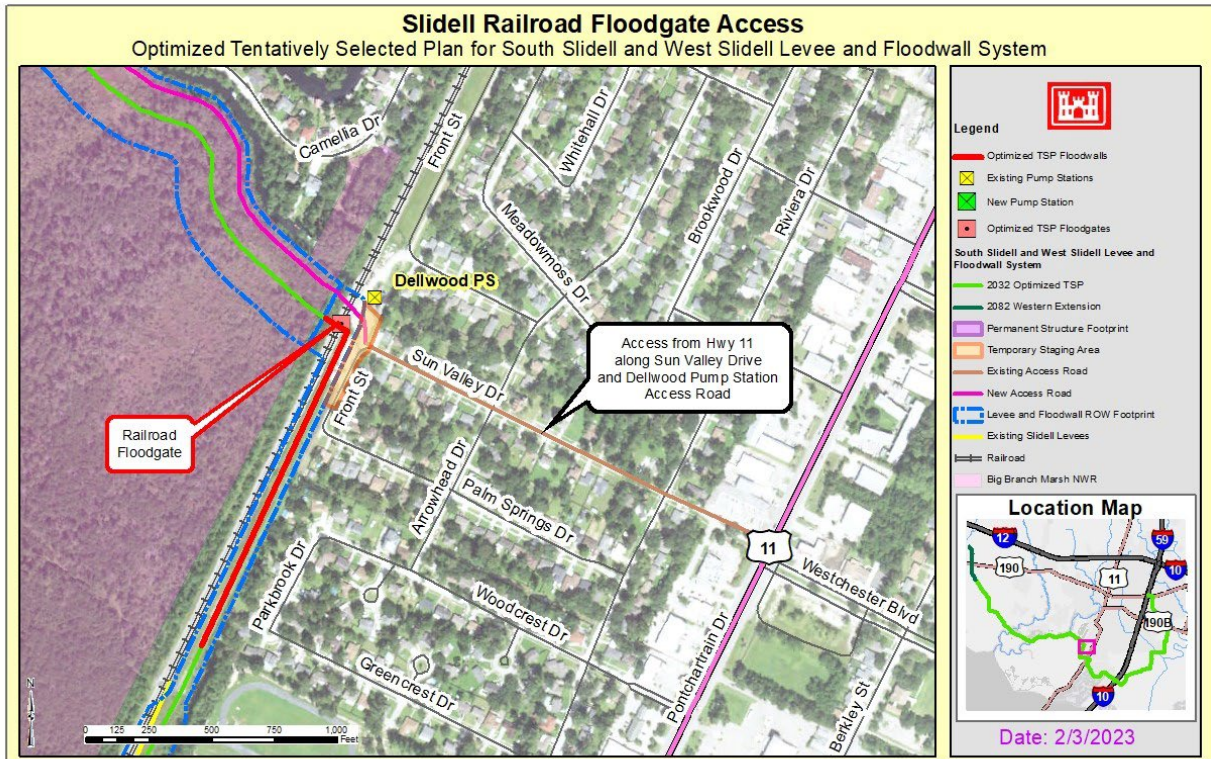


Figure D6:1-12. ROW, Access, and Staging Areas for Slidell Railroad Floodgate

1.13 ACCESS AND STAGING AREA FOR OAK HARBOR LEVEE

This levee is part of South Slidell.

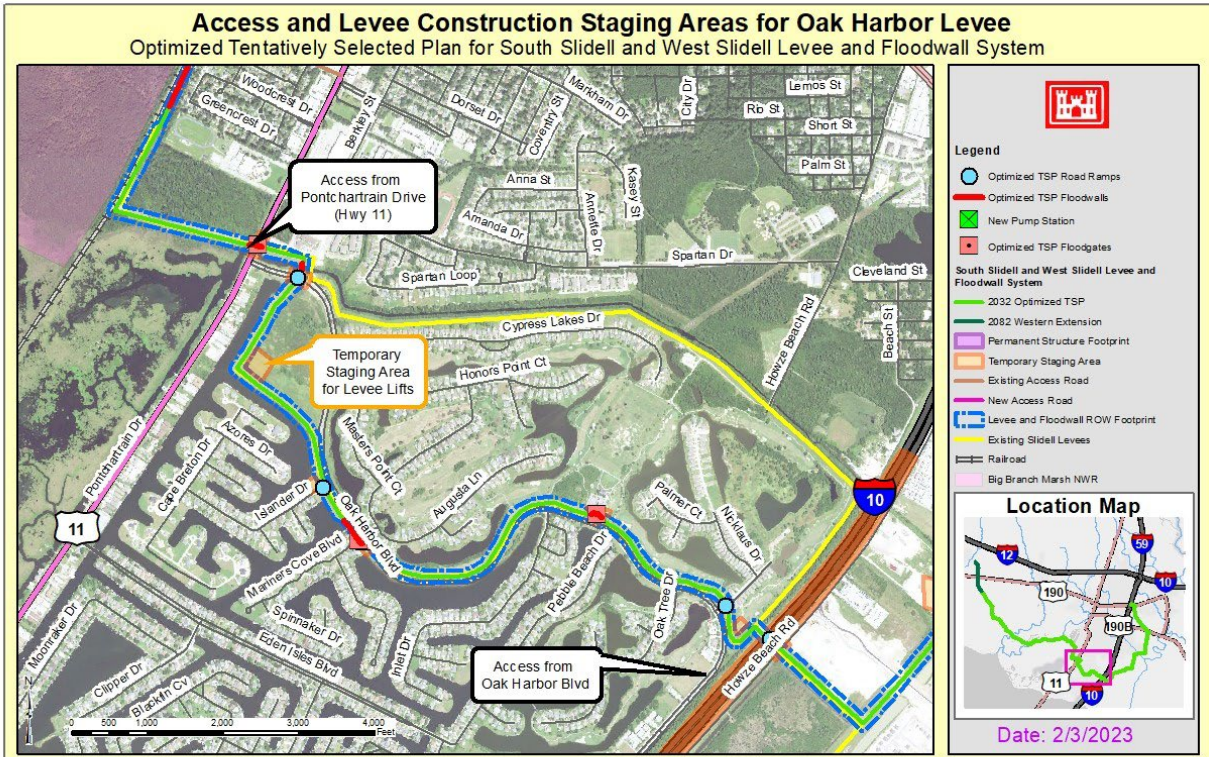


Figure D6:1-13. ROW, Access, and Staging Areas for Oak Harbor Levee

1.14 ACCESS AND STAGING AREAS FOR ALIGNMENT AT INTERSTATE CROSSING

This levee is part of South Slidell.

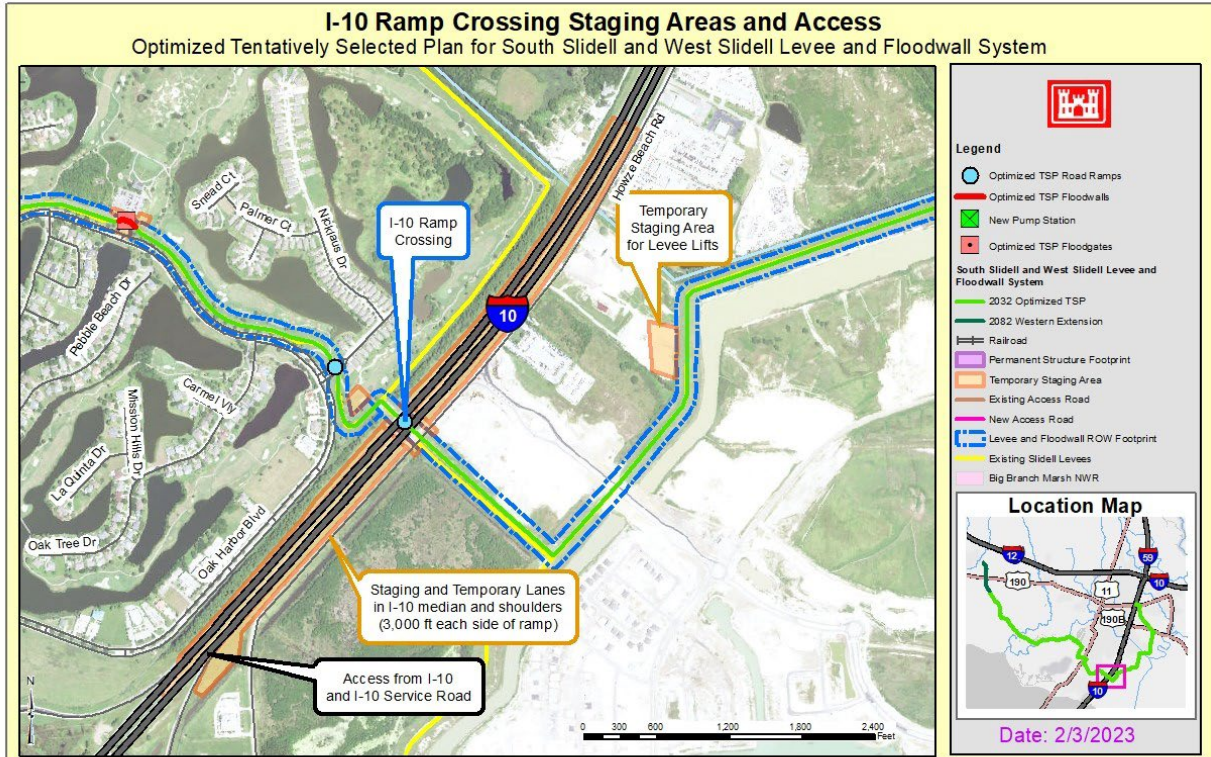


Figure D6:1-14. ROW, Access, and Staging Areas for the I-10 Crossing

Staging areas for the construction of the I-10 crossing would be in the median and within the DOTD ROW. No additional staging areas would be needed.

1.15 ACCESS AND STAGING AREA FOR I-10 TO OLD SPANISH TRAIL LEVEE

This levee is part of South Slidell.

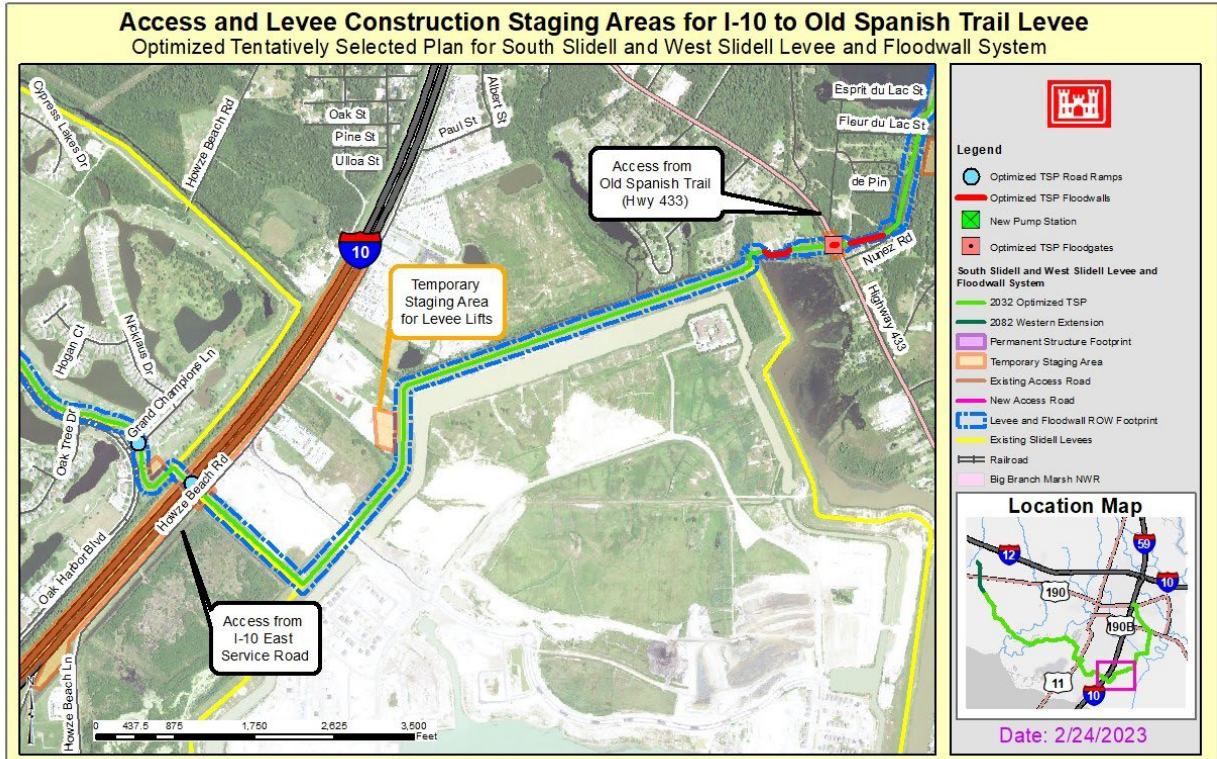


Figure D6:1-15. ROW, Access, and Staging Areas for the I-10 to Old Spanish Trail Levee

1.16 ACCESS AND STAGING AREAS FOR OLD SPANISH TRAIL VEHICULAR GATE

This vehicular gate is part of South Slidell.

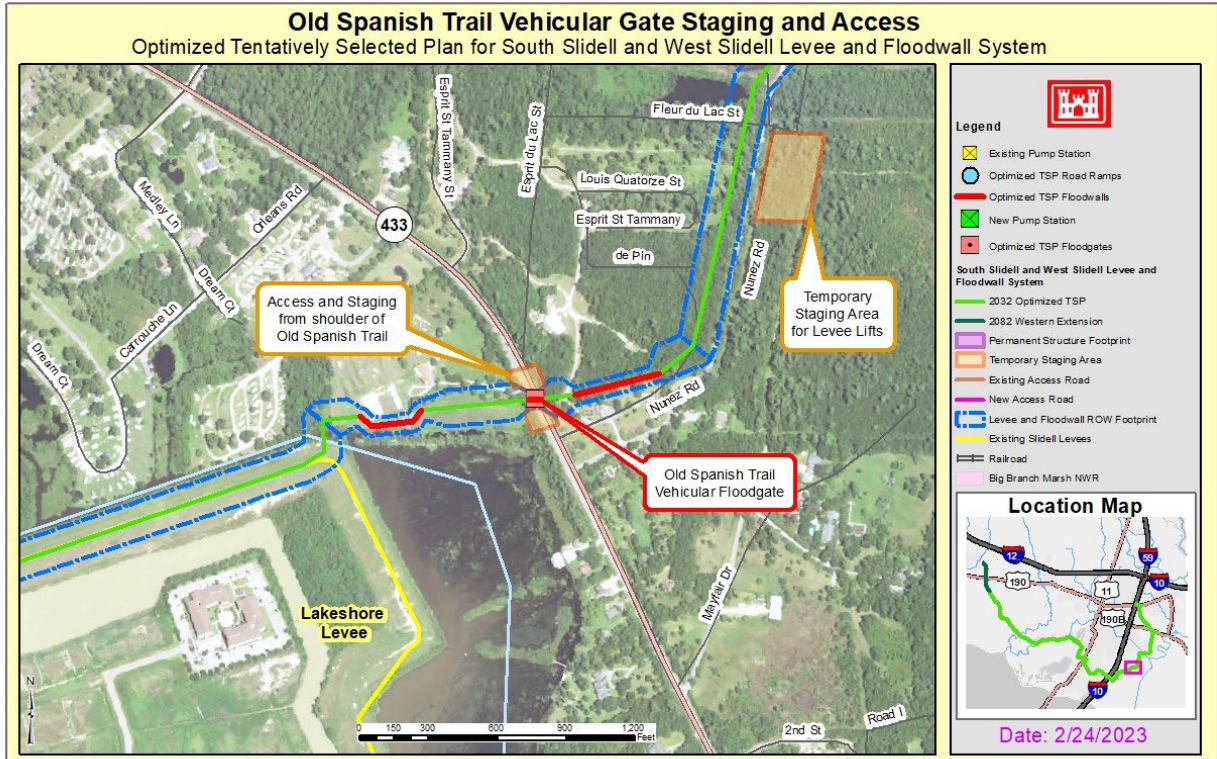


Figure D6:1-16. ROW, Access, and Staging Areas for the Old Spanish Trail Vehicular Gate

1.17 ACCESS AND STAGING AREA FOR LEVEE FROM OLD SPANISH TRAIL TO EASTERN FLOODWALL

This levee is part of South Slidell.

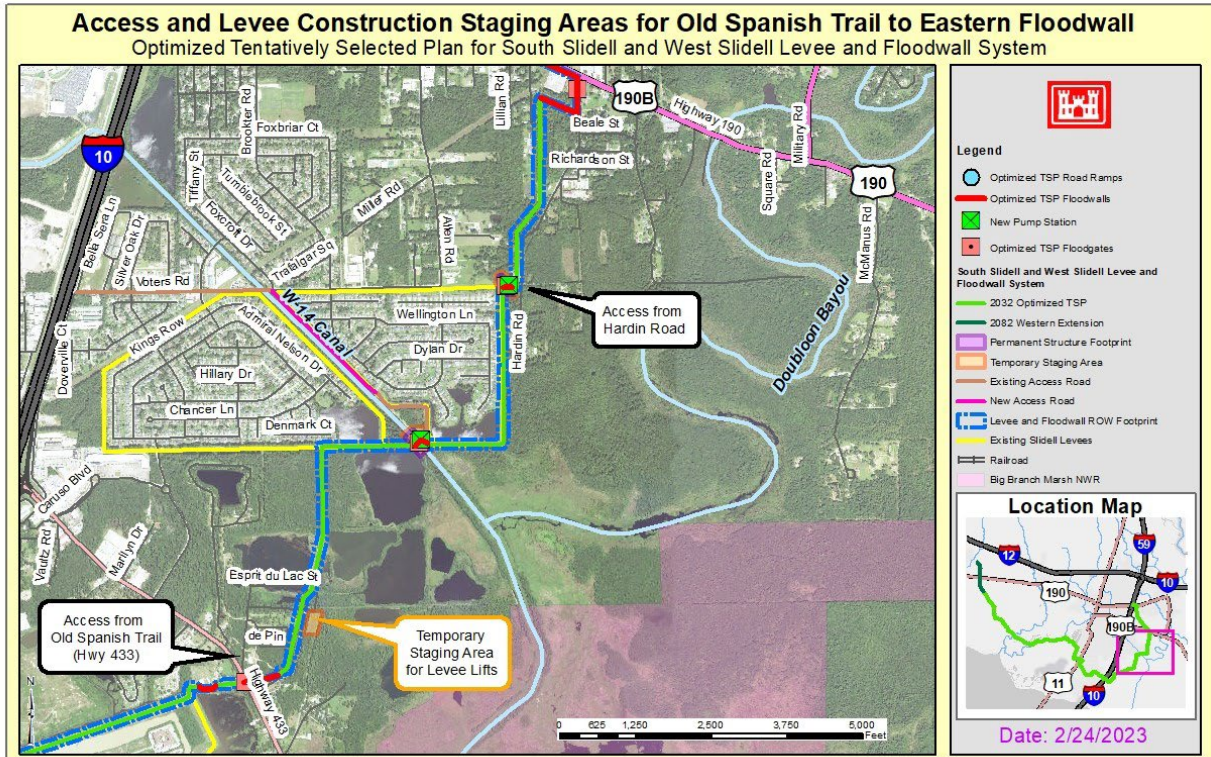


Figure D6:1-17. ROW, Access, and Staging Areas from Old Spanish Trail to Eastern Floodwall

1.18 ACCESS AND STAGING AREAS AT W-14 SECTOR GATE AND PUMP COMPLEX

The pump station and floodgate are part of South Slidell.

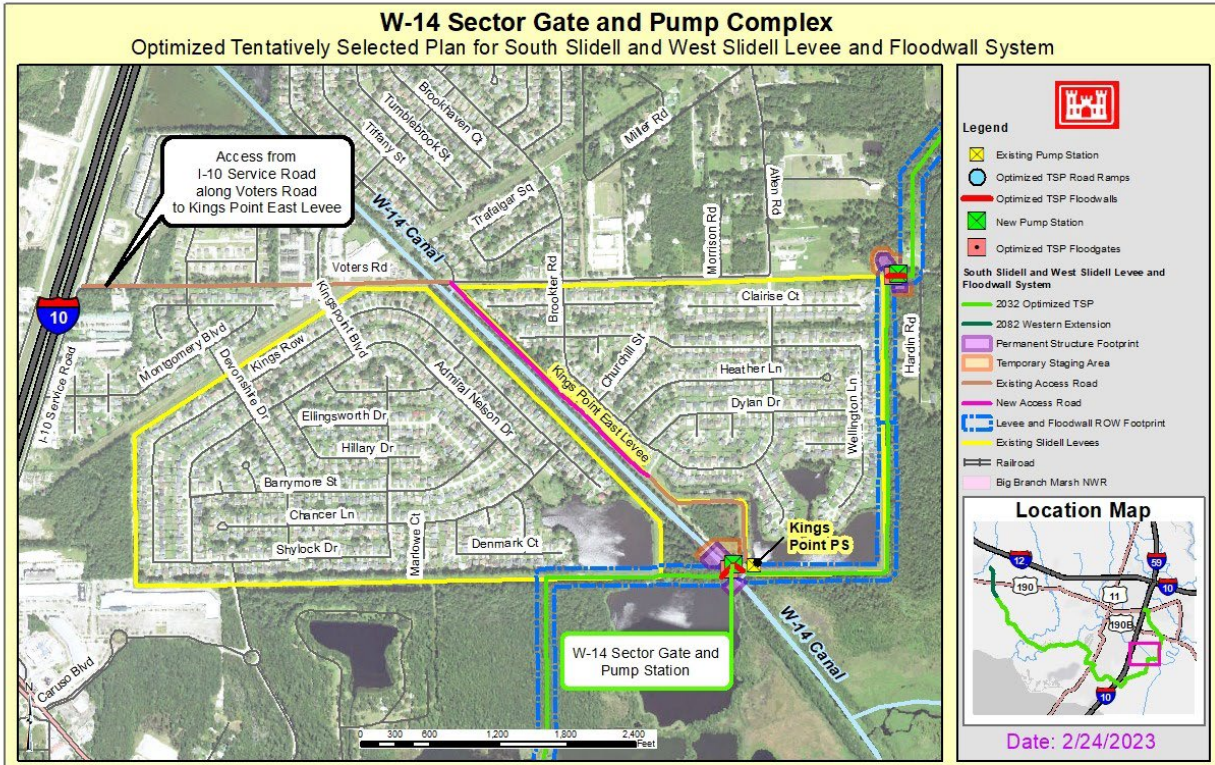


Figure D6:1-18. ROW, Access, and Staging Areas for W-14 Sector Gate and Pump Complex

1.19 ACCESS AND STAGING AREAS AT SLUICE GATE # 8

This sluice gate is part of South Slidell.

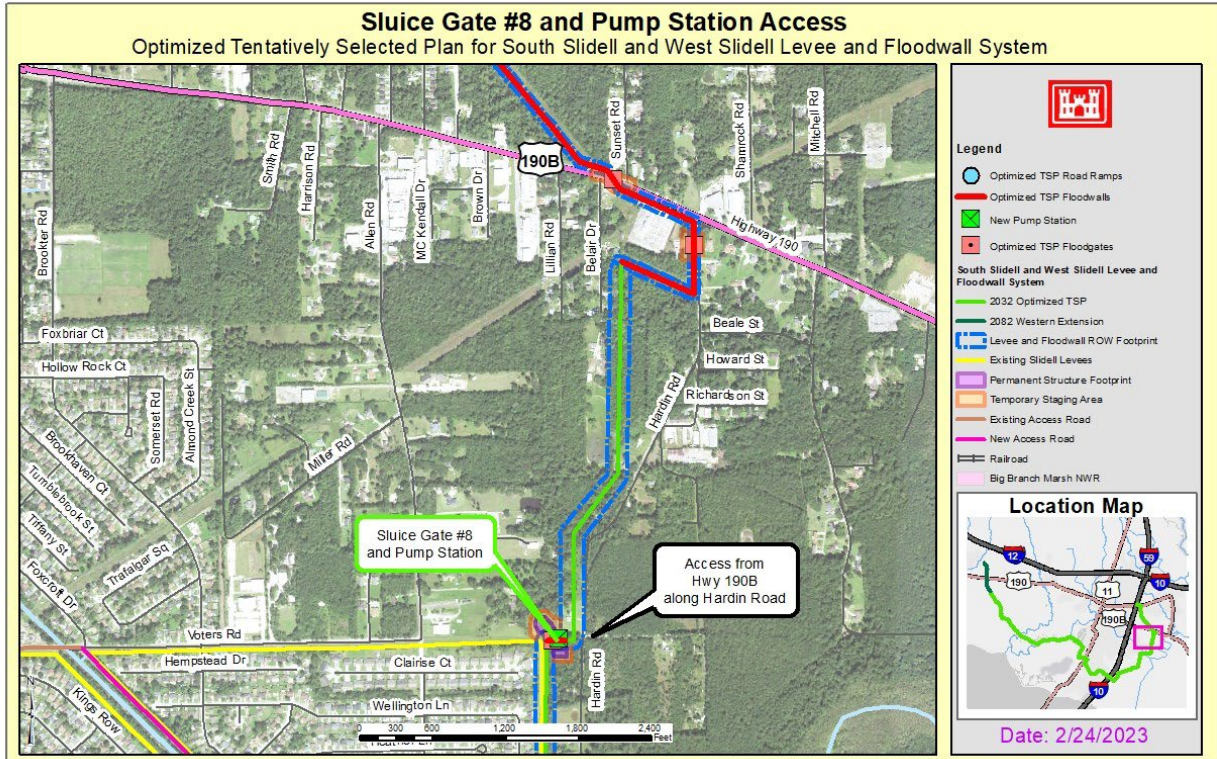


Figure D6:1-19. ROW, Access, and Staging Areas for Sluice Gate # 8

1.20 ACCESS AND STAGING AREAS AT GAUSE BOULEVARD AND I-10 TIE-IN

This portion of the alignment is part of South Slidell.

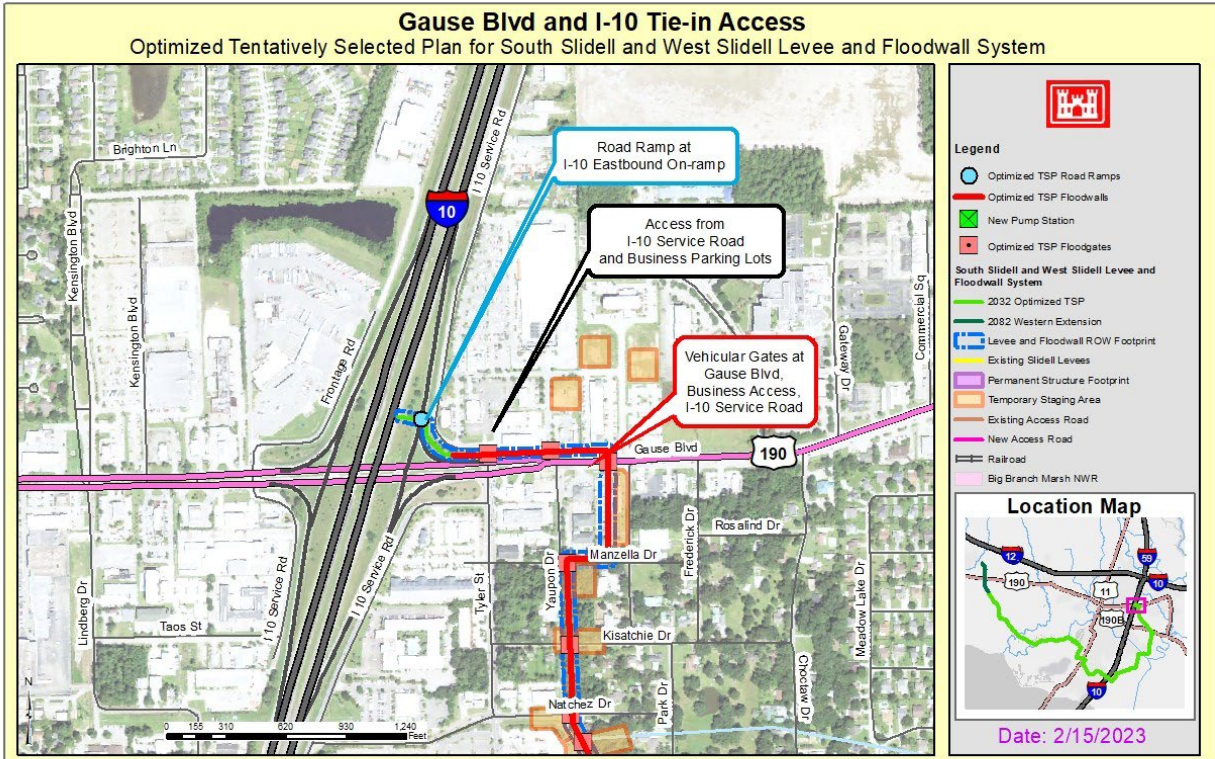


Figure D6:1-20. ROW, Access, and Staging Areas for Gause Boulevard and the I-10

1.21 ACCESS AND STAGING AREAS FOR FRENCH BRANCH AND REINE CANAL SLUICE GATES

These sluice gates are part of South Slidell.

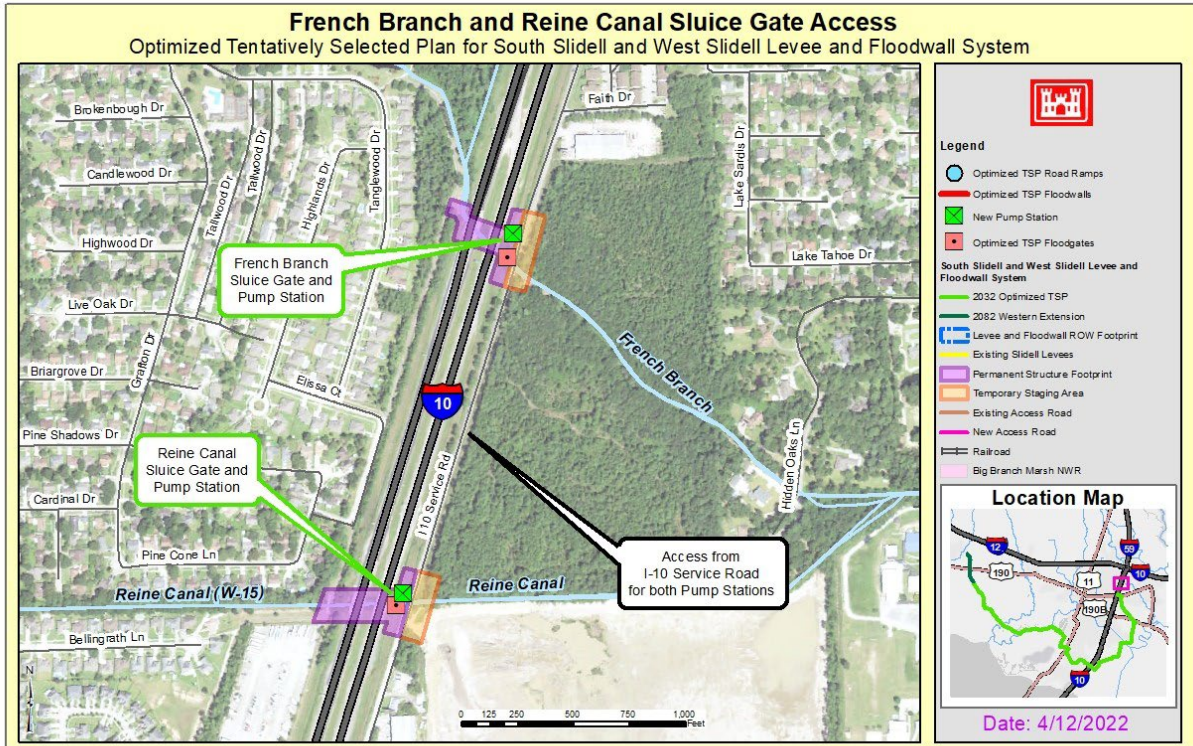


Figure D6:1-21. ROW, Access, and Staging Areas for French Branch and Reine Canal Sluice Gates

2. ROW, ACCESS AND STAGING AREA MAPS FOR MILE BRANCH CHANNEL IMPROVEMENTS

Figures D:1-65 to D:1-67 show the locations for the temporary ROW (staging areas) and the permanent ROW for the Mile Branch channel improvement features, starting from the north.

2.1 ACCESS, FEATURES, STAGING AREAS AND BACKWATER AREA FOR MILE BRANCH FROM COLLINS BOULEVARD TO COLUMBIA STREET

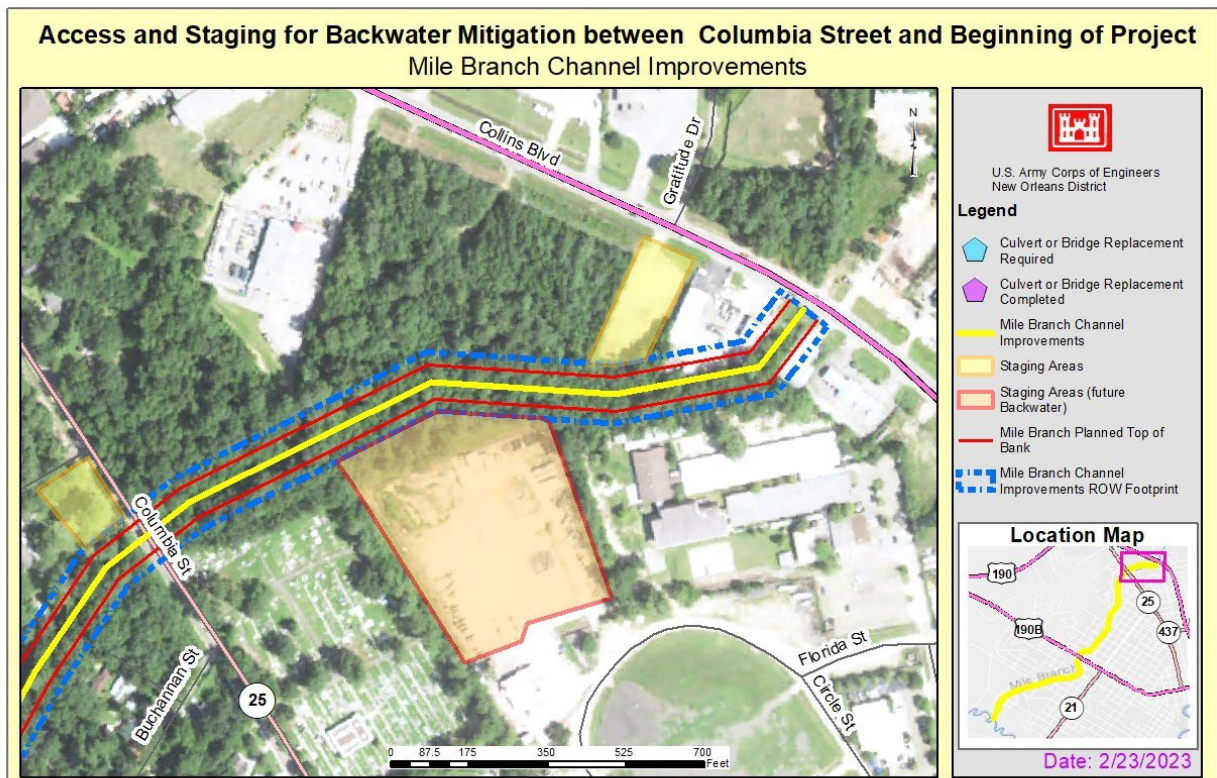


Figure D6:2-1. Access and Staging Area and Backwater Area for Mile Branch from Collins Boulevard to Columbia Street

2.2 ACCESS, FEATURES, AND STAGING AREAS FOR MILE BRANCH FROM COLUMBIA STREET TO 31ST AVENUE

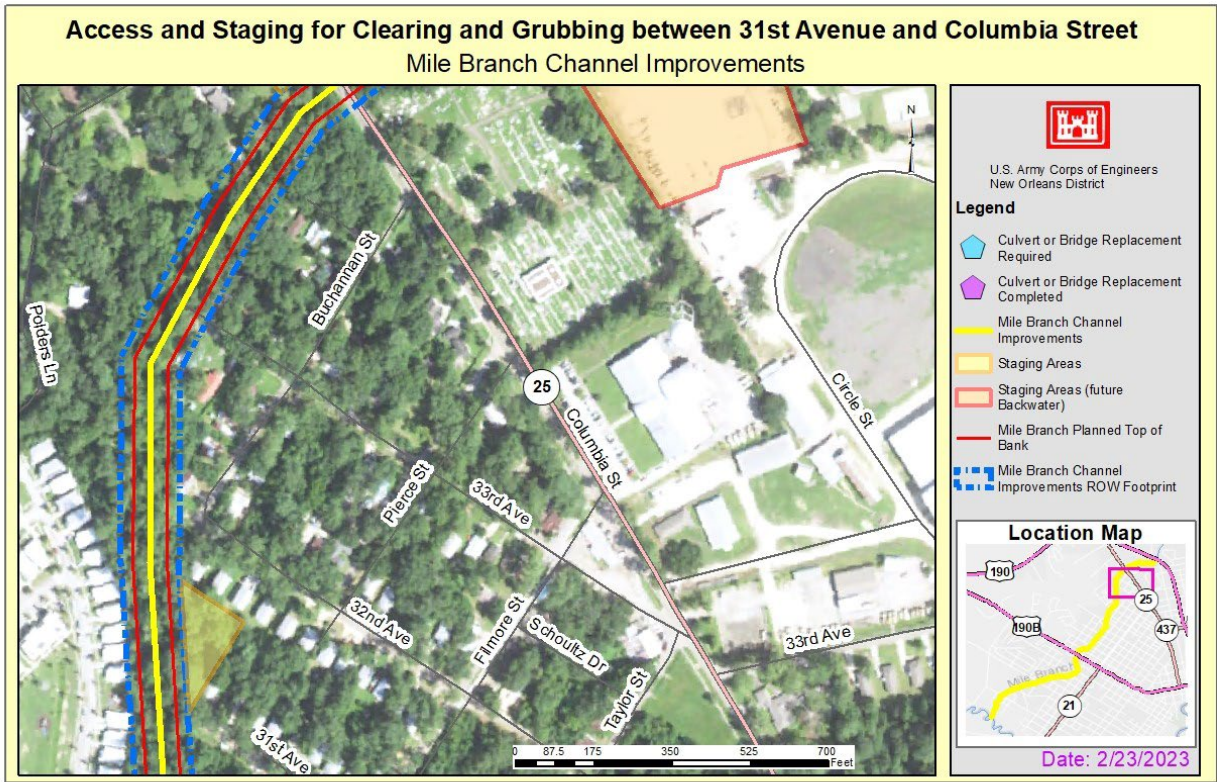


Figure D6:2-2. Access and Staging for Mile Branch from Columbia Street to 31st Avenue

2.3 ACCESS, FEATURES, AND STAGING AREAS FOR MILE BRANCH FROM 29TH AVENUE TO 27TH AVENUE

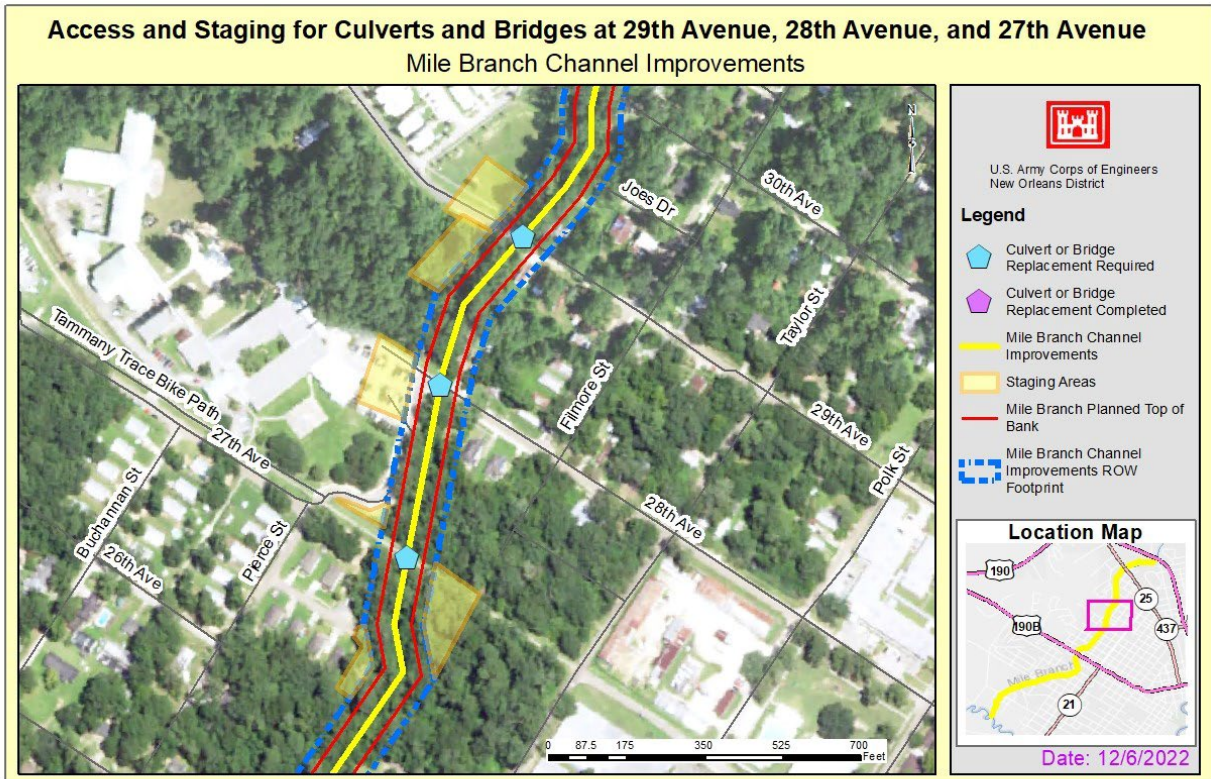


Figure D6:2-3. Access and Staging for Mile Branch from 30th Avenue to 26th Avenue

2.4 ACCESS, FEATURES, AND STAGING AREAS FOR MILE BRANCH FROM 25TH AVENUE TO 23RD AVENUE

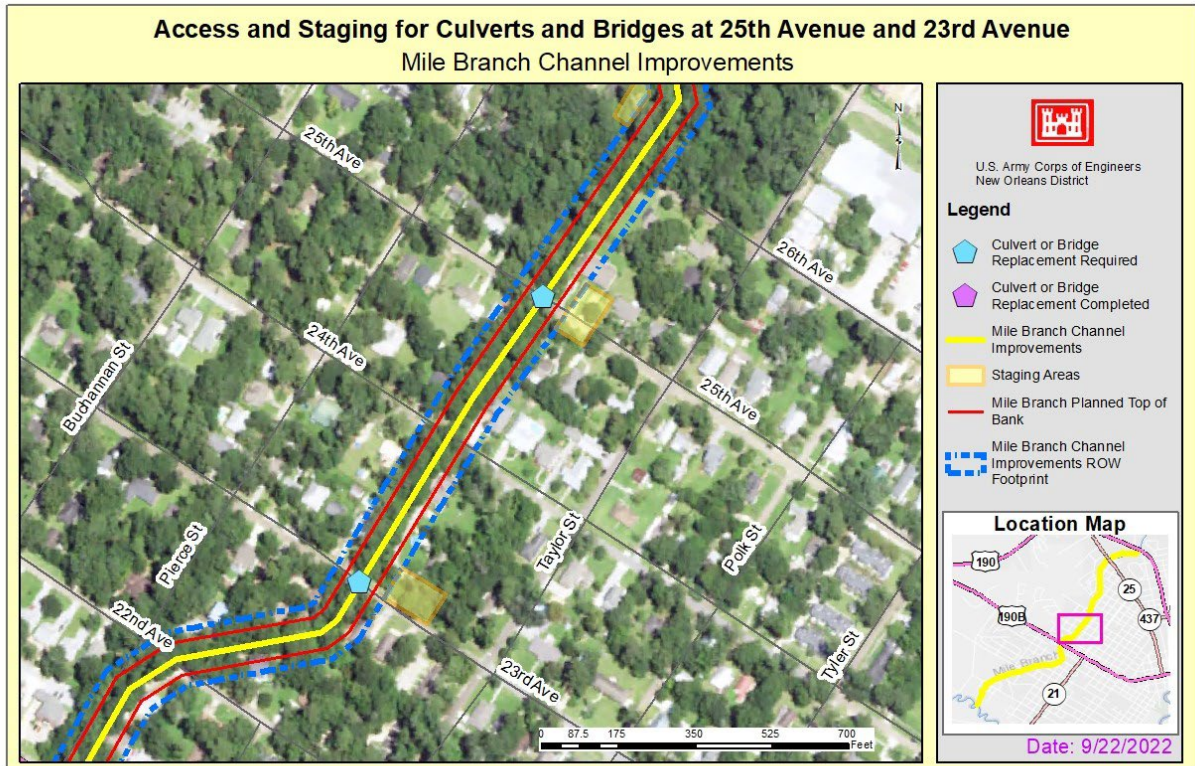


Figure D6:2-4. Access and Staging for Mile Branch from 26th Avenue to 22nd Avenue

2.5 ACCESS, FEATURES, AND STAGING AREAS FOR MILE BRANCH FROM 21ST AVENUE TO 19TH AVENUE

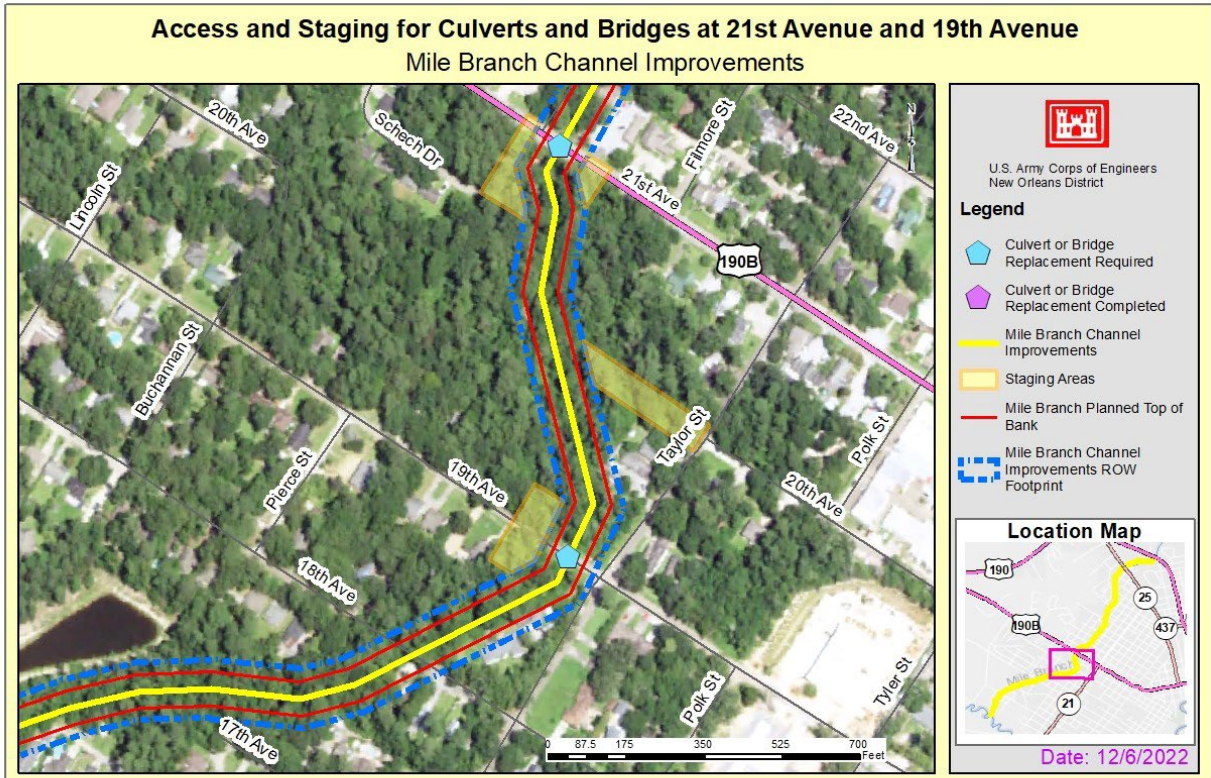


Figure D6:2-5. Access and Staging for Mile Branch from 22nd Avenue to 17th Avenue

2.6 ACCESS, FEATURES, AND STAGING AREAS FOR MILE BRANCH FROM 16TH AVENUE TO PRESIDENTS DRIVE

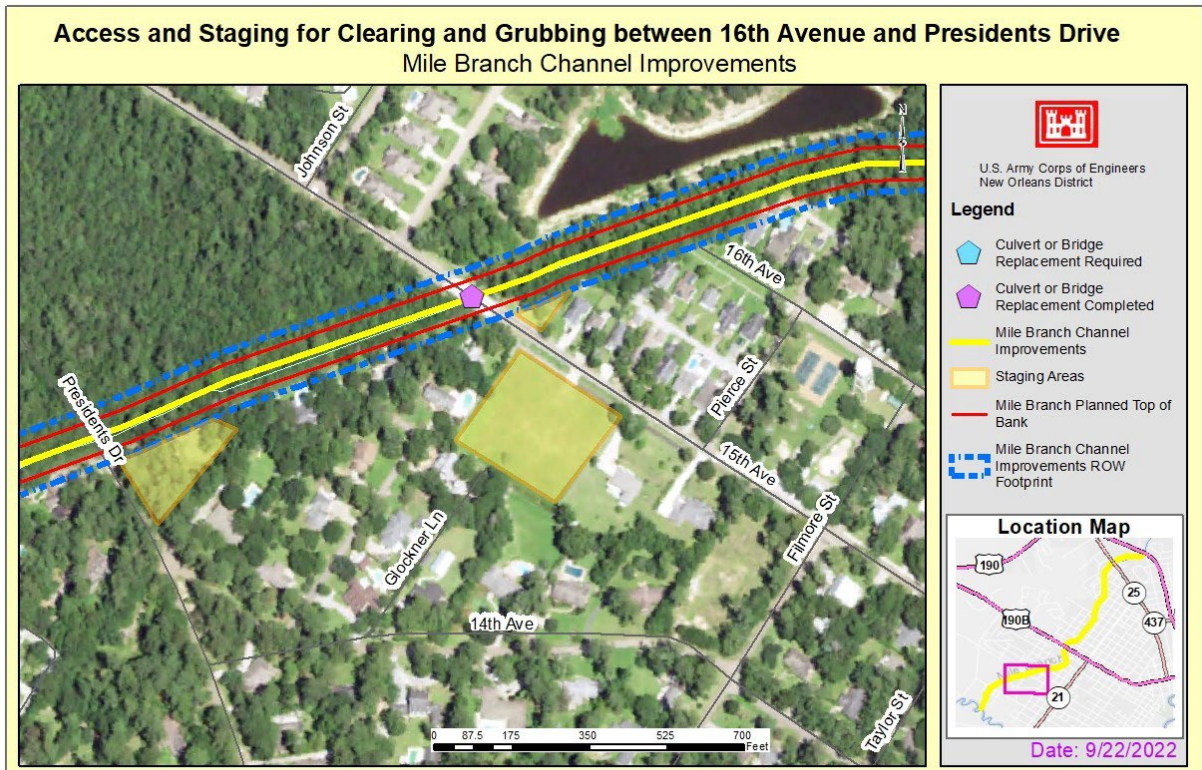


Figure D6:2-7. Access and Staging for Mile Branch from 16th Avenue to Presidents Drive

2.7 ACCESS, FEATURES, AND STAGING AREAS FOR MILE BRANCH FROM PRESIDENTS DRIVE TO TCHEFUNCTE RIVER

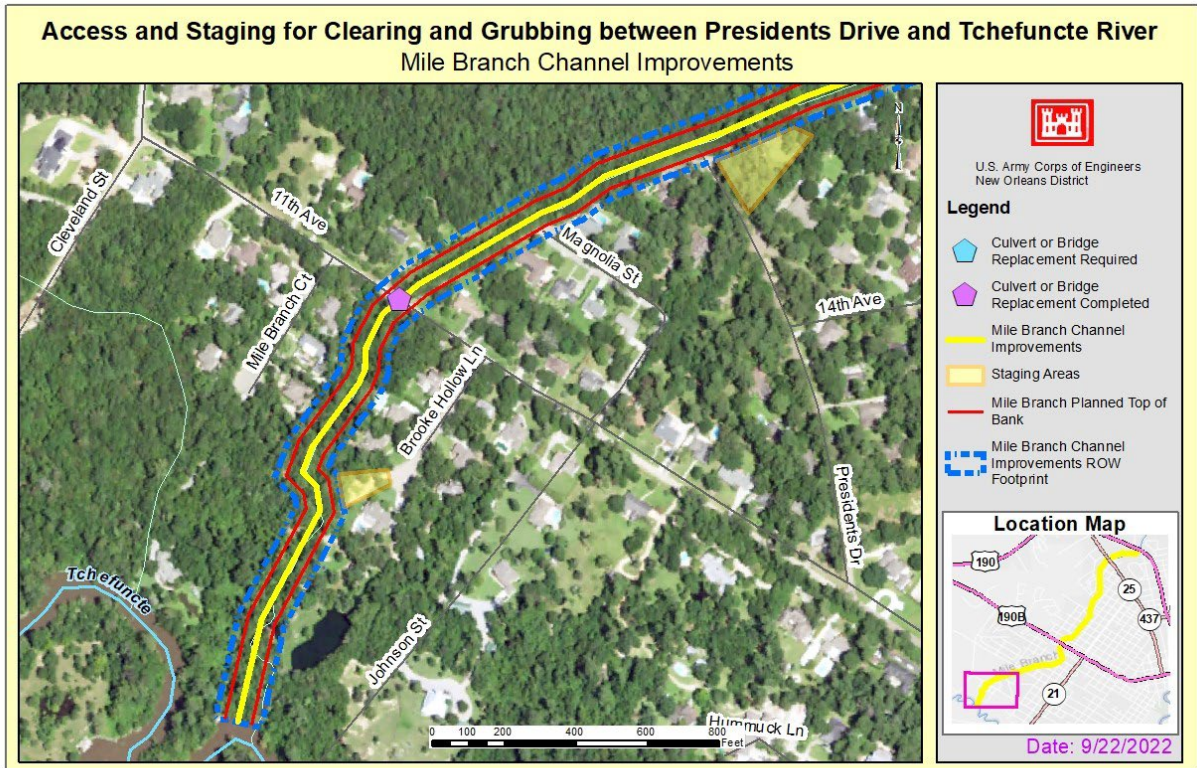


Figure D6:2-8. Access and Staging for Mile Branch from Presidents Drive to Tchefuncte River